

Gothic Revival 1840-1880:

- Steeply pitched, cross gabled roofs with dormers
- Decorated vergeboards and cross bracing along cornice line
- Scroll sawn brackets
- Polygonal chimney pots
- Pointed arch windows
- Broad long front porch



Eastlake Detailing 1872-1885:

- Named after English furniture designer Charles Locke Eastlake (1833-1906)
- Featured turned spindles and incised floral designs

Queen Anne 1880-1910:

- Steeply pitched, irregular roof shapes
- Multiple gables and dormers
- Occasional towers or turrets
- Partial or full-width porches
- Decorative surface textures
- Combines spindle work and Free Classic detail



Italianate 1840-1885:

- Generally 2 or 3 stories
- Low-pitched roof, with widely overhanging eaves
- Large, decorative brackets at cornice line
- Wide panel frieze
- Plain corner boards
- Tall, narrow windows paired and tripled, commonly with arch or curved above
- Sometimes square cupola or tower
- Single-story entry porches with supporting square post



Colonial Revival 1880-1955:

- Side gable roof with central and/or end chimneys
- Molded frieze and outriggers
- Symmetrical facades
- Doorways ornamented with columns, sidelights and transoms
- Balconied portico
- Classic detailing
- DUTCH COLONIAL: same as above but has a gambrel roof



Stick Style 1860-1890:

- Steeply pitched cross gabled roof sometimes with dormers
- Ornamental bracketing and bargeboards
- May have pattern of short verticals along cornice line, windows, and corner boards
- Large verandahs and porches, often decorated with simple diagonal braces



Tudor Revival 1890-1940:

- Steep roof
- Overlapping gables
- False half timbering
- False thatched roof
- Patterned brick or stone work
- Often mimics medieval cottages

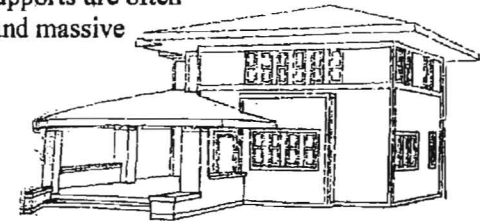


American Foursquare 1895-1930:

- Hipped roof, usually with dormers
- Exposed rafter tails and knee braces
- Broad front porch, that wraps around one or two sides of the house
- Little use of ornamentation
- Cubic in shape

Prairie 1900-1920:

- Low pitched roof, usually hipped with widely overhanging eaves
- Façade emphasizes horizontal lines
- Porch supports are often square and massive



Bungalow/Craftsman 1905-1930:

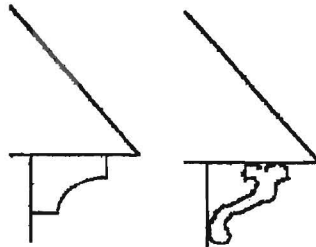
- Low-pitched, gabled roof, with wide overhanging eaves
- Decorative beams or braces under the eaves
- Incised porch, beneath main roof supported by tapered square columns



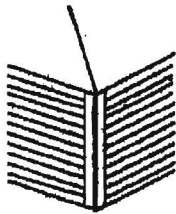
Bargeboard (verge board): A trim element running along the lower edge of a gable roof, originally a carved board with foliate Gothic ornamental devices, but later translated into flat scroll-sawn patterns.



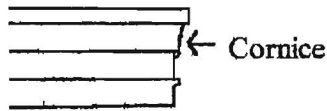
Bracket: A projecting support used under cornices, balconies, eaves or windows to provide structural or purely visual support.



Corner Boards: Placed at the end of exterior walls to protect the siding.



Cornice: Specifically, the uppermost and projecting section of the entablature; hence, the uppermost projecting molding or combination of brackets and moldings used to crown a building or to define the meeting of wall and ceiling.



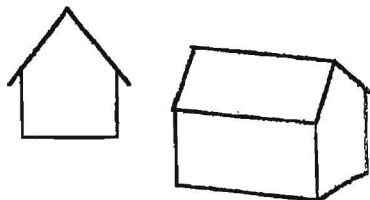
Dormer: Vertical window projecting from the slope of a roof.



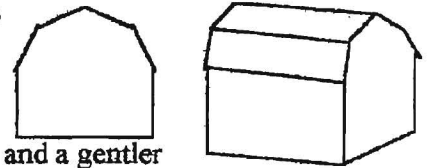
Frieze: The flat, horizontal panel between the lower architrave and the crowning cornice, ornamented with low-relief sculpture.



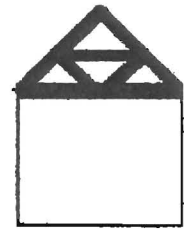
Gable Roof: A simple roof composed of two flat surfaces meeting to form a straight ridge.



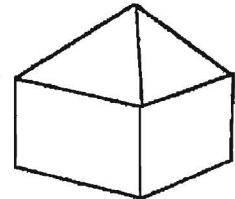
Gambrel Roof: A roof, similar to a gable roof, but with two slopes on each side, a steeper pitch to the lower outer portion of the roof, and a gentler pitch to the upper center portion of the roof.



Half Timbering: Characteristic of Medieval buildings when the beams held the buildings up and the spaces between them were filled with plaster.

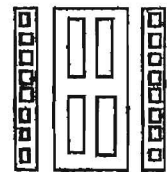


Hip Roof: A roof of four sloped surfaces that meet in a point.



Portico: A covered walk or porch supported by columns or pillars; a colonnaded porch or veranda.

Side Light: Usually a long, fixed sash found in pairs along side a window or door.



Spindle Work: Lathed turned wood ornaments used in gable trim, porches, and staircases.



Transoms: Window found above an entry, and a window.

